

ASIAN HERCULES

1600 MT SEAGOING
FLOATING SHEERLEG
CRANE

General

Class	ABS ∇ A1 Barge
Call sign	9V3256
Port of Registry	Singapore

Principal dimensions

Length o.a.	70 m
Breadth	42 m
Depth	7.2 m
Gross Tonnage	5946 ton
Nett Tonnage	3407ton
Full Load Transit Draft	4.387 m
Minimum transit draft (even trim)	
“A” frame stowed	3.84 m
“A” frame upright	2.80 m
Maximum draft after lift	
2 x 800 T Lift	
Fwd Draft	5.75 m
Aft Draft	3.00 m
4 x 300 T lift	
Forward draft	4.80 m
Aft draft	3.90m
Speed	5 knots

Propelling machinery

2 x AQM 632
output 1194 kW

Lifting capacities

Main hoists 2 x 500 T + 2 x 300T

JIB II hoists 2 x 200 T

JIB III hoists 2 x 500 T

Sea transit

The vessel can transit across seas without load as per ABS unrestricted service with boom and outrigger resting backwards

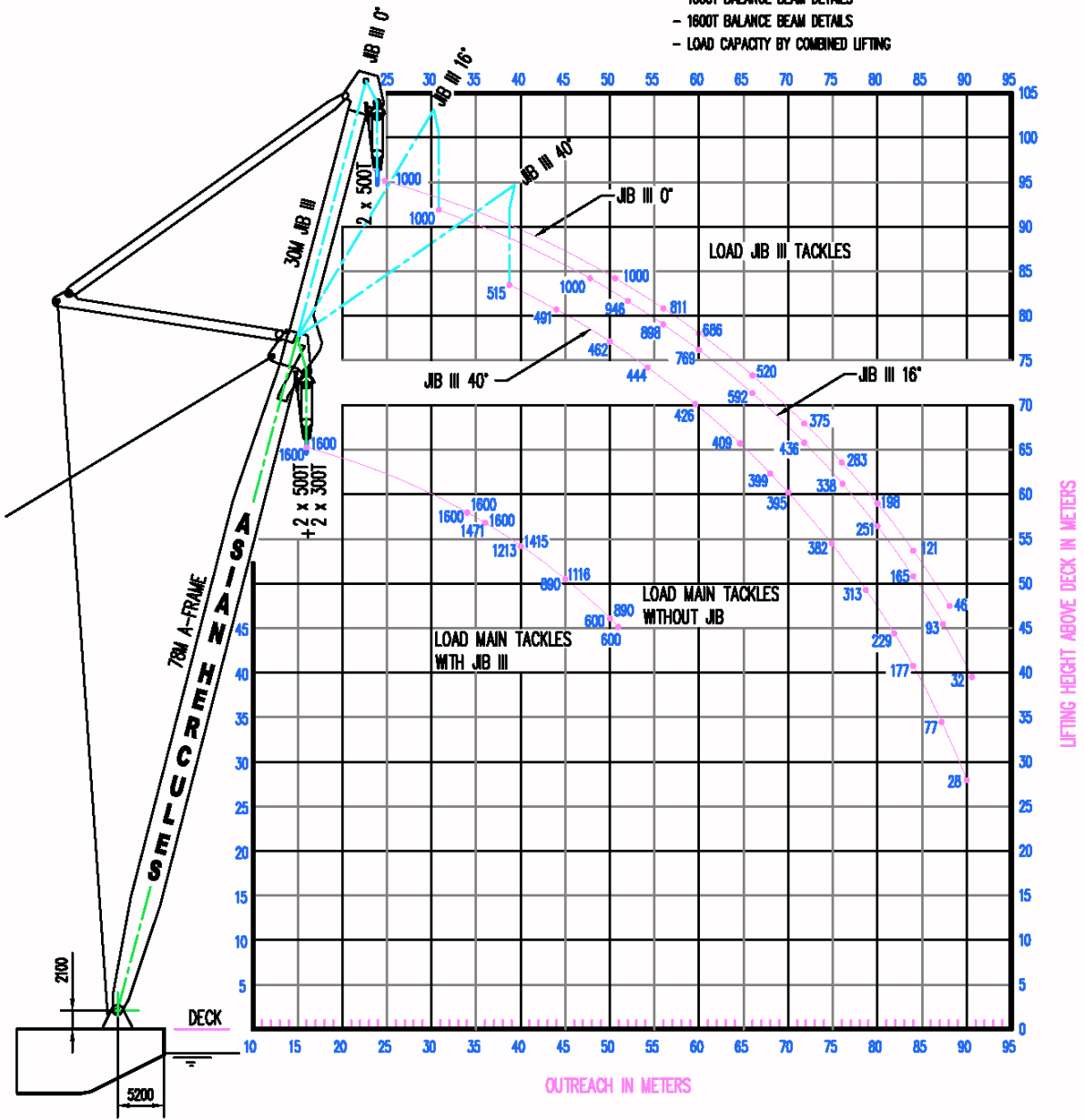
Accommodation 29 persons

NOTE :

ALL LOADS IN METRIC TONNES AND FOR INLAND WATER.

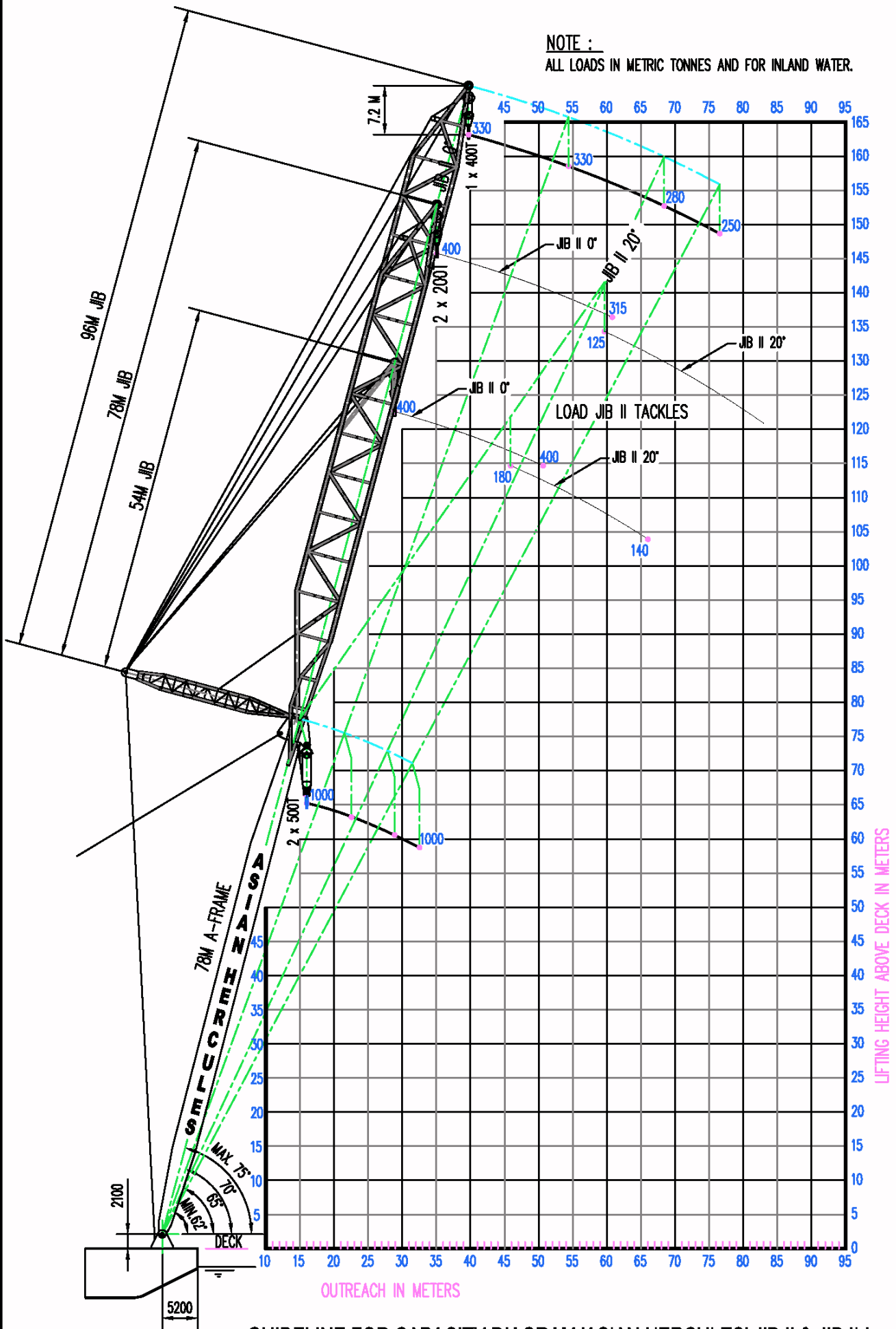
THE FOLLOWING INFORMATION ARE ON REQUEST :

- BOOM BALANCE BEAM DETAILS
- 1000T BALANCE BEAM DETAILS
- 1600T BALANCE BEAM DETAILS
- LOAD CAPACITY BY COMBINED LIFTING



CAPACITY DIAGRAM 'ASIAN HERCULES' JIB III

NOTE :
ALL LOADS IN METRIC TONNES AND FOR INLAND WATER.



GUIDELINE FOR CAPACITY DIAGRAM 'ASIAN HERCULES' JIB II & JIB II-L



For Enquiries, please contact

Asian Lift Pte Ltd
23 Gul Road , Singapore 629356
Tel: 6668 4222, Fax: 6668 4333
E-mail: asianlift@asianlift.com.sg
Website: www.asianlift.com.sg

Keppel **FELS**

