

ASIAN HELPING HAND III



ASIAN HELPING HAND III 400 MT ASSISTED SHEERLEG CRANE

Name	Asian Helping Hand III
Flag	Singapore
Port of Registration	Singapore
Callsign	9V5334
Built	1996
Official Number	387341

General	
Class	ABS * A1 Barge

Principal dimensions	
Length	50 m
Breadth (moulded)	24.50 m
Depth (moulded)	4 m
Loadline draft displacement	2604 T
Gross Tonnage	1370 T
Nett Tonnage	411 T

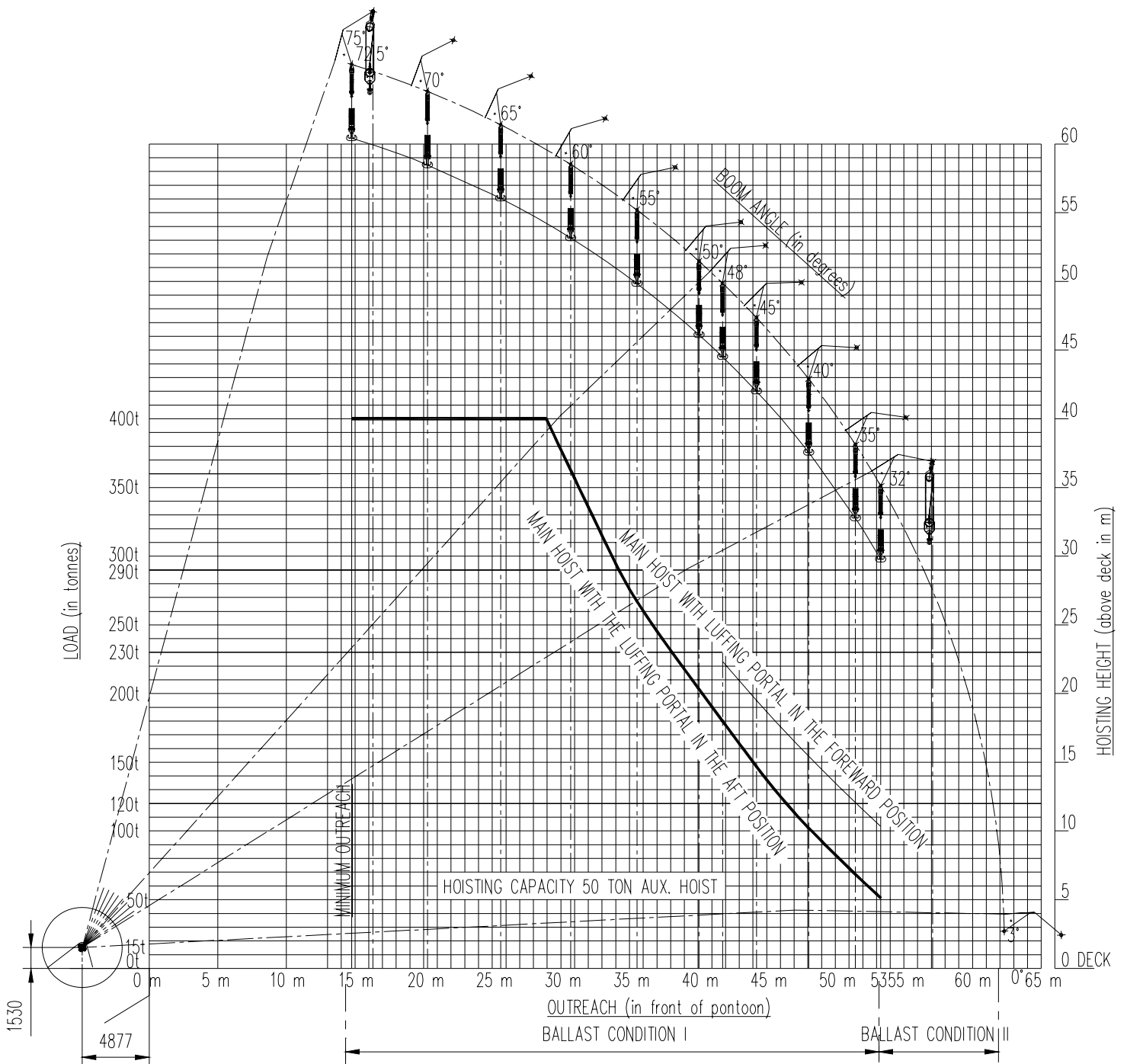
Tanks Capacity	Volume (m³)	Weight (tonnes)
Water ballast	10583.1	10847.6
Fresh water	203.8	203.8
Fuel oil settling tank	56.4	47.9
Fuel oil day tank	28.7	24.4
Bilge holding tank	8.4	8.4
Sewage holding tank	17.8	18.7

Lifting Capacity	
A-frame	2 x 200 T tackles 400T
Jib (20 m)	2 x 100 T tackles 100 T
Jib (37 m)	2 x 50 T tackles 100 T
Flyjib	2 x 50 T tackles 100 T

Generators	
Main generators	2 x 300 kW Detroit diesel generators (415V/3ph/50Hz)
Auxiliary generator	1 x 50 kW Detroit diesel generators (415/3ph/50Hz)

Boat	
	1 unit 6 m, 55 hp steel workboat with diesel powered propulsion

Accommodation	
	12 persons



LIFTING CHART
SCALE 1:400

For Enquiries, please contact

Asian Lift Pte Ltd
23 Gul Road , Singapore 629356
Tel: 6668 4222, Fax: 6668 4333
E-mail: asianlift@asianlift.com.sg
Website: www.asianlift.com.sg

